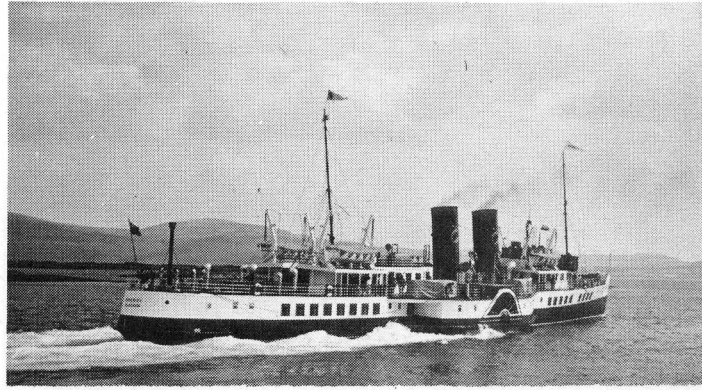




CLYDE RIVER STEAMER CLUB



Special Excursion from
Gourock, Kilcreggan
Wemyss Bay and Largs to

BRODICK & CAMPBELTOWN returning via Kyles of Bute by Paddle Steamer WAVERLEY

on Saturday, 15 September, 1973

ITINERARY

GOUROCK depart 0915
KILCREGGAN arrive 0925
KILCREGGAN depart 0945
WEMYSS BAY depart 1030
LARGS depart 1100

BRODICK arrive 1220
... .. depart 1250
CAMPBELTOWN arrive 1515
... .. depart 1600

ROTHESAY arrive 1930
WEMYSS BAY arrive 2000
DUNOON arrive 2030
KILCREGGAN arrive 2050
GOUROCK arrive 2100

CONNECTIONS (No extra charge)

DUNOON—outward: 0835 by m.v. Glen Sannox to Gourock.
ROTHESAY—outward: 0945 by m.v. Bute/Cowal to Wemyss Bay.
LARGS—return: 2005 by chartered motor vessel from Wemyss Bay.

MILLPORT—outward: 1030 by ferry from Cumbrae Slip to Largs. return: 2005 by chartered motor vessel from Wemyss Bay to Old Pier.

CONNECTING TRAINS —

0820 from Glasgow (Central) to Gourock.
0940 from Glasgow (Central) to Wemyss Bay.

LUNCHEON (85p) and **HIGH TEA** (75p) will be served at times detailed below. Children under ten — 45p and 40p (Prices include VAT)

MEAL TICKETS SHOULD BE OBTAINED IN ADVANCE

In addition, Teas and refreshments will be available in the Cafeteria. The Steamer is fully licensed.

Book by Post only to:
Mr IAN McCORIE, 72 Newton St., Greenock, PA16 8ST.

FARE £2.00

£2.30 if booked on day of trip

Children still at school £1.00 (£1.20)

CLYDE RIVER STEAMER CLUB — Excursion by Waverley to Brodick and Campbeltown on Saturday 15 September, 1973.

To: Mr I. McCorie, 72 Newton Street, Greenock, PA16 8ST. I wish to make the following bookings for the above excursion and enclose a remittance for £ in favour of the "Clyde River Steamer Club", together with a stamped, addressed envelope.

From: Name
Address